



SY-P031HD5 Portable HD Endoscope Camera System

Highly integrated endoscopic imaging system solution
Provide endoscope solutions for portable application scenarios



6 Six core integrated system

1080p full HD Sony Cmos

Luminus LED Ra \geq 75

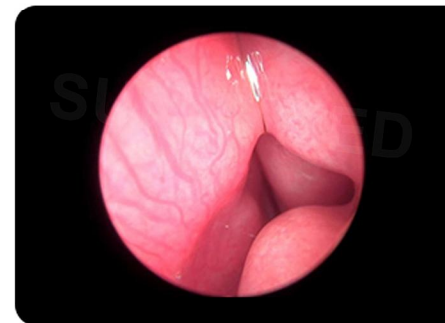
Various parameters preset modes

Two external displays at the same time

SDI video signal output, no delay

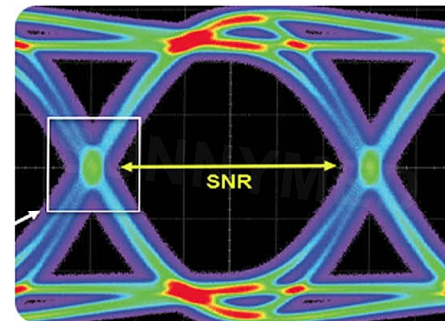
Portable Aluminum alloy one-piece shell

Accurate and efficient Diagnostic innovation



HD images

Breaking through the limitations of traditional analog visual imaging technology, it has faster transmission rate, higher definition images, more accurate color gamut space, and brings more accurate image diagnosis to users.



Collection and display

Rapid processing hardware +SDI camera architecture, full digital transmission link. Provide high-fidelity, ultra-low delay image acquisition and display.



Adaptation and compatibility

Through the optical coupler, it can be connected to the original brand endoscope in the operating room to achieve multi-purpose use of one machine .

Data collection Output directly

The product is designed with two outputs, which can be displayed on two screens at the same time. One output can be used for data collection through a collection device or connected to a case management system, and the other output can be used for real-time display.



Straight out of the picture,
no delay,
high color reproduction,
high dynamic range,
low noise



Medical LED cold light source

$Ra \geq 75$

Luminus LED $Ra \geq 75$

6W LED

Similar with 150W power xenon lamp brightness
Even better

USB power

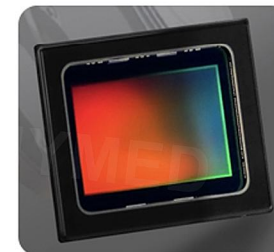
Reduce maintenance costs,
USB 5v power supply,
compatible with most USB power
supply interfaces

High compatibility

Widely compatible with various
brands of endoscope interfaces



High definition camera



SONY CMOS chip, high color
reproduction, high
dynamic range,
Low noise.



1920*1080 full HD, SDI signal output,
high-definition image,
ultra-low latency transmission




Portable design OSD



OSD

Camera parameters can be adjusted through the OSD. Multiple modes with various parameters are pre-programmed for different applications.

 USB5V power supply
Connect USB light source, simple and convenient



Metal connector

Reliable connection and long working life



aluminium alloy shell

Rugged and portable workstation

General optical bayonet design

Can be connect with various rigid endoscope/flexible endoscopes

Suitable for other imported and domestic brands of rigid endoscope
Such as laparoscopy, electroprostatescope, cystoscope, hysteroscope, sinuscope, arthroscope and so on

Most imported, domestic flexible endoscopes
Such as Tracheal Intubation Fiberscope, flexible ureteroscope and so on.

Sunny Medical Equipment Limited

ADD:F12,Jinying Building,No.316,Huanshi Middle Road,Xiaobei,Yuexiu,Guangzhou,China

Tel:0086-15802011816

E-mail:sale001@sunnymedeqp.com

Web:www.sunnymedgz.com